

3D Anthropomorphic Skull Phantom

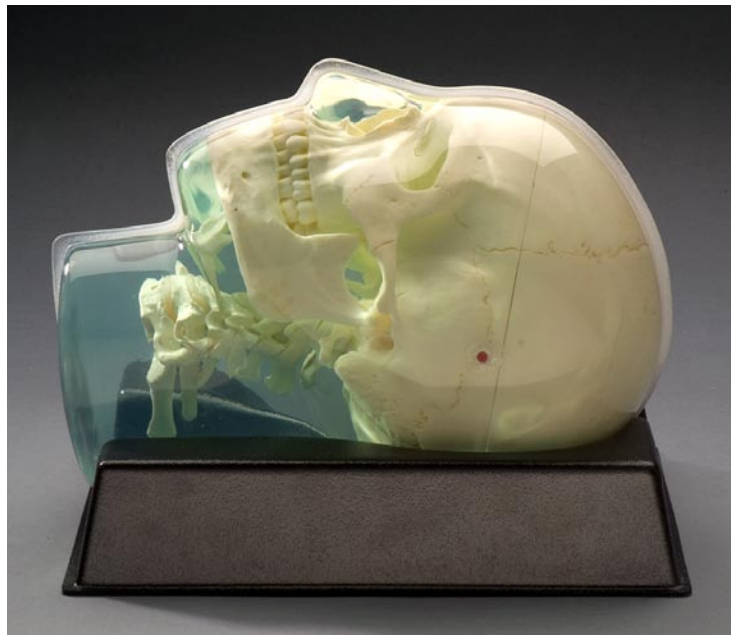
For Rapid Assessment of Image Displacement in Gamma Knife and Other Treatment Planning Systems

The CIRS skull phantom is made from materials which can be imaged using x-ray, CT and MR. The skull is manufactured from an epoxy based tissue substitute. The interstitial and surrounding soft tissues are made from a proprietary water based polymer. The gel can be formulated to accommodate specific requirements such as x-ray attenuation, contrast, and MR response. The entire phantom is encased in a vacuum formed plastic shell for ease of use and durability.

Available options include:

- Wire or point targets in various locations
- Simulated tumors

Skull phantoms are made to order. Contact CIRS if you have a unique requirement.



Model 603

Features

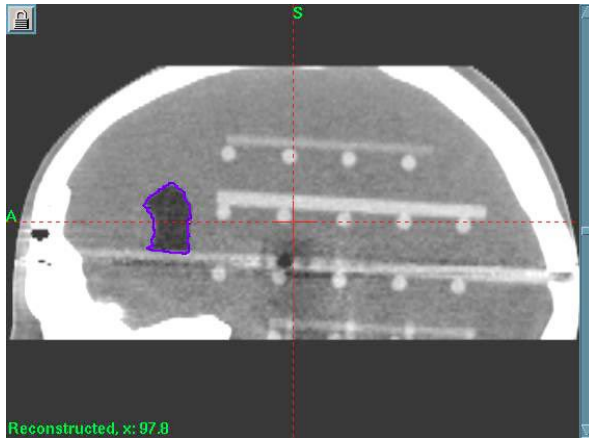
- Images well on T1, T2 and 3DTOF MRI acquisitions
- Images well on CT scans
- Stereotactic frame can be applied to special reinforced pads
- Images can be imported into stereotactic localization program
- CT scans can be used to assess MRI accuracy

*Tissue Simulation &
Phantom Technology*

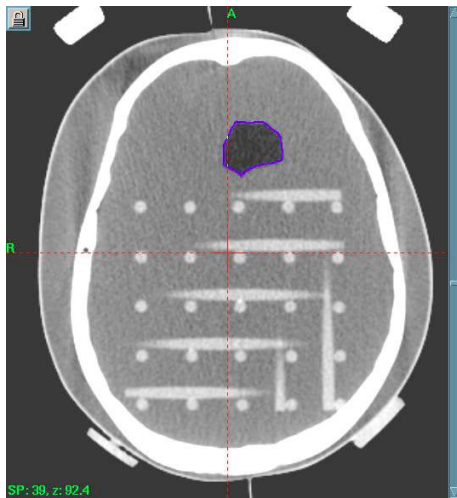
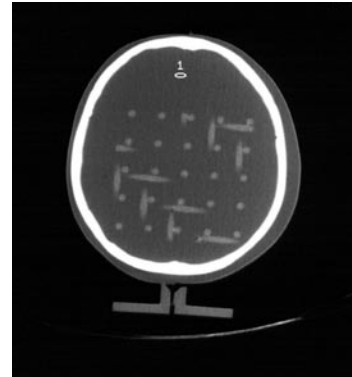
CIRS

2428 Alameda Avenue • Suite 212 • Norfolk, Virginia 23513 • USA
(800) 617-1177 • (757) 855-2765 • FAX (757) 857-0523
www.cirsinc.com • admin@cirsinc.com

3D Skull Phantom Specifications



- Three dimensional orthogonal acrylic rod matrix through cranial volume enables assessment of image distortions



- Optional lesion also available

