

# Ultrasound Prostate Training Phantom

*The ideal training device for permanent seed implantation procedures*

The CIRS Model 053-I Ultrasound Prostate Training Phantom is a disposable phantom developed for practicing permanent seed implantation procedures. It contains several unique features to assist the teaching and learning process.

The simulated perineal membrane permits needle insertion with realistic resistance. In addition, the area below the rectal wall is a clear gel to permit visualization of probe orientation. The prostate is transparent to allow visual verification of seed placement. The phantom also

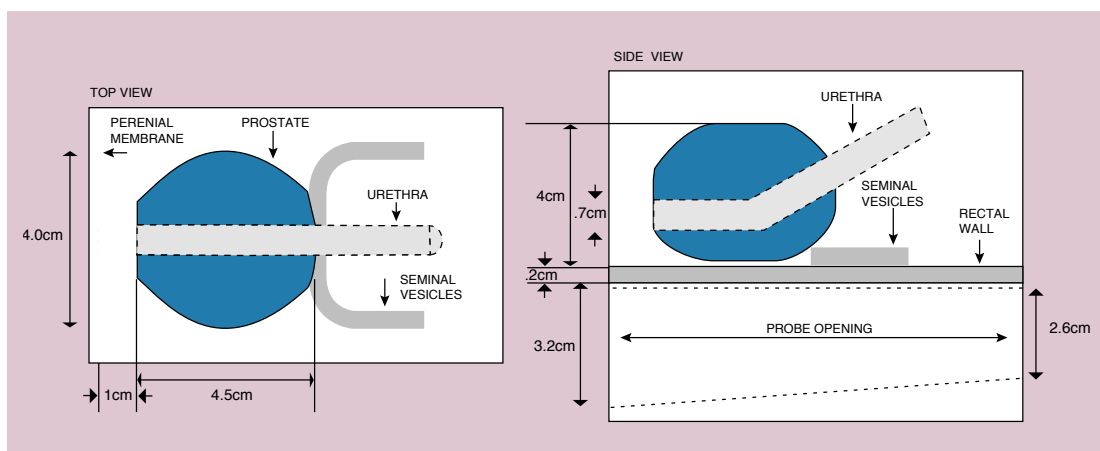


**Model 053-I**

includes a removable pubic arch simulation.

This modification to the CIRS Model 053 phantom was de-

veloped with Dr. Peter Grimm and his associates at the Seattle Prostate Institute.



*Tissue Simulation & Phantom Technology*

**CIRS**

2428 Alameda Avenue • Suite 212 • Norfolk, Virginia 23513 • USA  
 (800) 617-1177 • (757) 855-2765 • FAX (757) 857-0523  
 www.cirsinc.com • admin@cirsinc.com

# Model 053-I Specifications

## **CONTAINER:**

Material: Clear acrylic  
Dimensions: 11.5 cm X  
7.0 cm X 9.5 cm  
Front probe opening:  
3.2 cm diameter  
Rear probe opening:  
2.6 cm diameter

## **PERINEAL MEMBRANE:**

3 mm thick urethane

## **BACKGROUND GEL:**

Similar to water with very little  
backscatter attenuation  
 $\leq 0.07$  dB/cm/MHz

## **URETHRA:**

Dimensions: 0.7 cm diameter  
Material: Zerdine<sup>(1)</sup>, low scatter

## **SEMINAL VESICLES:**

Dimensions: 7 mm diameter X  
10 cm long  
Material: Zerdine<sup>(1)</sup>  
Properties: Speed=1540 m/s  
Attenuation= 0.5 dB/cm/MHz  
Backscatter similar to liver tissue

## **PROSTATE:**

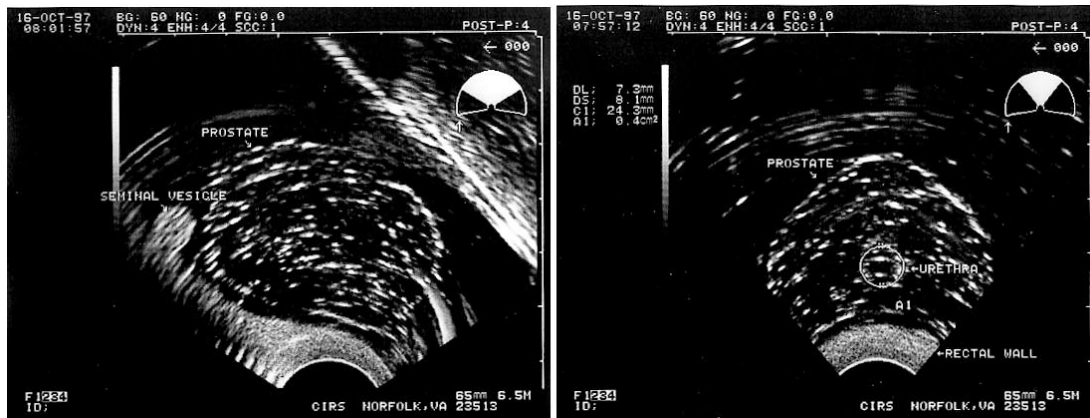
Dimensions: 4 cm X 4.5 cm  
X 4.0 cm  
Material: Zerdine<sup>(1)</sup>, low scatter

## **RECTAL WALL:**

Dimensions: 6 cm X 11 cm  
X 0.2 cm  
Material: Zerdine<sup>(1)</sup>  
Properties: Speed=1540 m/s  
Attenuation= 0.5 dB/cm/MHz  
Backscatter similar to liver tissue

## **OTHER FEATURES:**

Removable pubic arch



**Note:** This phantom not intended to ultrasonically mimic the human prostate.

<sup>(1)</sup> US Patent # 5196343